

**Codman**<sup>®</sup>  
SPECIALTY SURGICAL

A DIVISION OF INTEGRA LIFESCIENCES



**Integra<sup>®</sup> Jarit<sup>™</sup>**  
**Laparoscopic Instruments**  
Product Catalog  
2018 Edition

**INTEGRA**<sup>®</sup>  
LIMIT UNCERTAINTY

<b>Table of contents</b> .....	2
<b>Guarantee/Warranty</b> .....	3
<b>Indications - Contraindications</b> .....	3
<b>Integra® Jarit™ 3-Piece Modular</b> .....	5
Assembly and Disassembly .....	6
<b>Handles</b> .....	8
Axial-Style Handle .....	8
Ergonomic Ring Handle .....	8
<b>Shaft</b> .....	9
Shaft 5mm .....	9
Shaft 10mm .....	9
<b>Inserts</b> .....	10
Biopsy cup 5mm .....	10
Clamp 5mm .....	15
Clamp 10mm .....	19
Dissecting forceps 5mm .....	10
Dissecting forceps 10mm .....	19
Extracting forceps 5mm .....	15
Grasping forceps 5mm .....	11 - 15
Grasping forceps 10mm .....	18
Needle Holder 5mm .....	17
Scissors 5mm .....	16
<b>Integra® Jarit™ One-Piece</b> .....	21
Articulator Retractor .....	23
Fan Retractors .....	22
Forceps .....	23
Needle Holders .....	23
<b>Integra® Jarit™ Accessories</b> .....	25
Cleaning and Storage Accessories .....	26
Electrosurgical Accessory .....	26
<b>Laparoscopic Suggested Sets</b> .....	27
Set for Laparoscopic Appendectomy .....	29
Set for Laparoscopic Bariatric Procedure .....	30
Set for Laparoscopic Bariatric Procedure (Alternate Suggested Set) .....	31
Set for Laparoscopic Cholecystectomy .....	28
<b>Numerical Index</b> .....	34
<b>Alphabetical Index</b> .....	35

INTEGRA LIFESCIENCES CORPORATION ("INTEGRA") warrants to the original purchaser only that each new INTEGRA product is free from manufacturing defects in material and workmanship under normal use and service for a period of two (2) years (except as otherwise expressly provided as to accessory items) from the date of delivery by INTEGRA to the first purchaser, but in no event beyond the expiration date stated on any product labeling.

All instruments sold by Integra Jarit are warranted only to the original purchaser and only against defects in workmanship or materials which under the intended use render such instruments inoperable.

All Integra® Jarit™ Carb-Bite™ instruments are further warranted for a period of three (3) years under normal use. Should any adjustment become necessary during this warranty period, Carb-Bite™ Needle Holder jaw inserts will be replaced without charge.

All Integra® Jarit Supercut™ Scissors are further warranted for a period of one year under normal use. Should any sharpening become necessary during this warranty period, Integra Jarit will provide this service without charge. A nominal charge will be made for sharpening after expiration of this warranty. Integra® Jarit Supercut™ Scissors will be date-stamped for control.

This Guarantee/Warranty shall be void in the event any Integra Jarit instrument is used for purposes other than as originally intended, is not maintained or cleaned properly, is damaged as a result of misuse or accident or is repaired or altered by unauthorized persons.

The above is a limited warranty, and it is the only warranty made by Integra Jarit. Integra Jarit makes no other warranty, express or implied, including any warranty of merchantability or fitness for a particular purpose, as well as any express or implied warranty to patients. Integra Jarit shall have no liability for consequential, exemplary or incidental damages even if it is aware of the possibility of such damages. No warranty or guarantee may be created by any act or statement nor may this warranty be modified in any way, except as a result of a writing signed by an officer of Jarit. These limitations on the creation or modification of this warranty may not be waived or modified orally or by any conduct. The stated express warranty is in lieu of all liabilities or obligations of Integra Jarit arising out of, or in connection with, the delivery, use or performance of any Integra Jarit instrument. Integra Jarit neither assumes nor authorizes any representative or other person to assume for it any other liability in connection with Integra Jarit's products.

All products are subject to slight changes in dimensions and finishes due to changes in manufacturing standards.

#### **Ordering Procedure**

A written purchase order on customer's form may be requested for purchase of Integra® products.

#### **Acceptance of Order**

Orders are accepted upon approval by Integra.

#### **Returned Goods Policy**

Products must be returned in unopened packages with manufacturer's seals intact to be accepted for replacement or credit unless returned due to a complaint of product defect. Determination of a product defect will be made by Integra. Products will not be accepted for replacement if they have been in the possession of the customer for more than 90 days.

#### **Repairs and Maintenance**

Should your instruments require repair or maintenance, contact Integra for return authorization and address. Instruments returned to Integra for repair must have a statement testifying that each instrument has been thoroughly cleaned and sterilized. Failure to supply evidence of cleaning and disinfection will result in a cleaning charge and delayed processing of your instrument repair.

#### **Product Information Disclosure**

Integra and its subsidiaries ("Integra") and manufacturer exclude all warranties, except Integra's applicable standard warranty whether expressed or implied, including but not limited to, any implied warranties of merchantability or fitness for a particular purpose. Neither Integra nor manufacturer shall be liable for any incidental or consequential loss, damage, or expense, directly or indirectly arising from use of these products. Neither Integra nor manufacturer assume nor authorize any person to assume for them any other or additional liability or responsibility in connection with these products.

#### **Care and Handling/IFU**

For Care and Handling information and Instructions for use, please visit [integralife.com/jarit](http://integralife.com/jarit).

## **Indications - Contraindications**

**Indications** : All the medical devices showed in this banner have indications for laparoscopy.

Endoscopic Monopolar Instruments and Accessories are used in laparoscopic and other minimally invasive procedures for cutting, dissection, fixation and taking of biopsy samples, depending on the design of the tip. They are also intended to control bleeding by use of monopolar high-frequency electrical current.

**Contraindications** : Do not use in indications other than the indications mentioned in the DFU or Labeling.

Consult product labels and insert for any indication, contraindications, hazards, warnings, precautions and instruction for use.

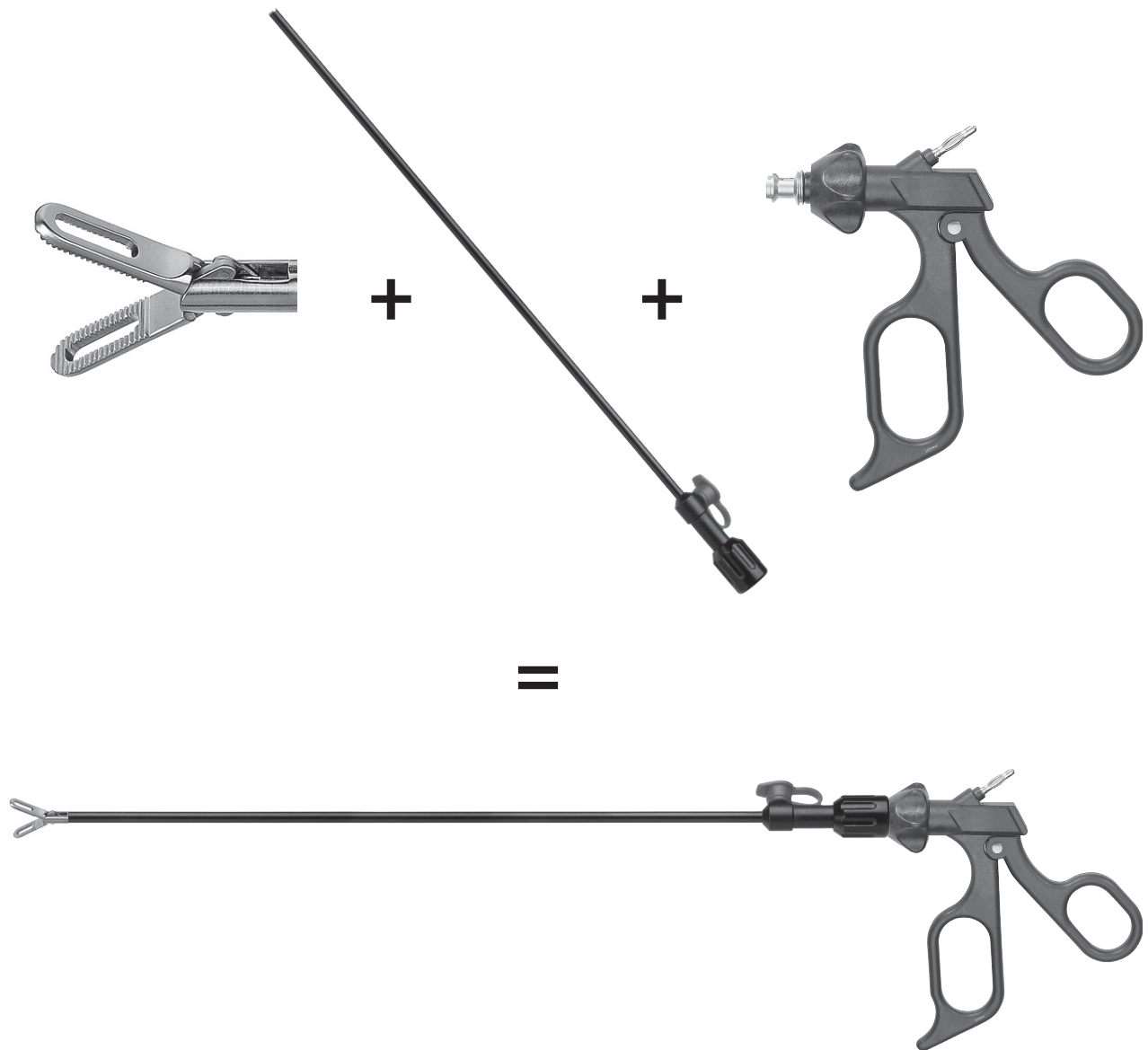




# **3-Piece Modular Instruments**

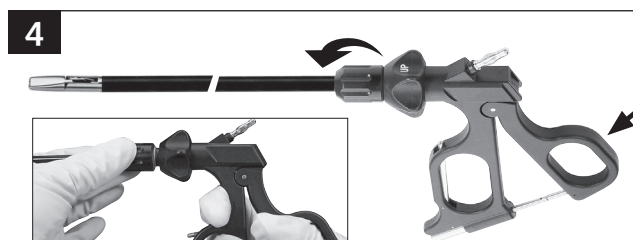
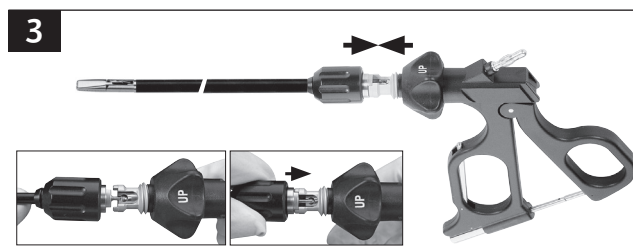
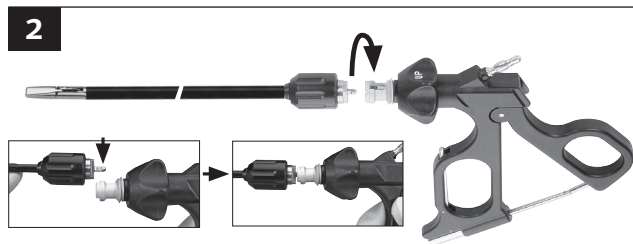
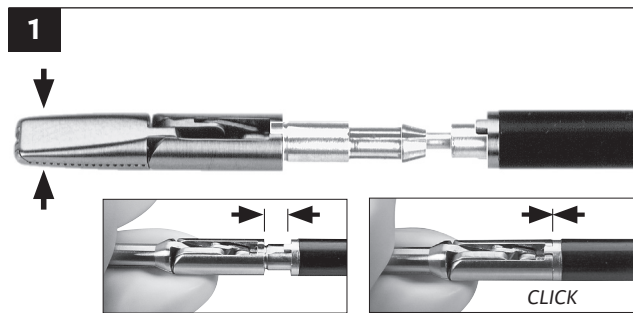
The Integra 3-Piece Modular Laparoscopic instrument consists of a handle and shaft, with an extensive variety of tip inserts to suit complex minimally invasive procedures. Instruments completely disassemble for effective cleaning and decontamination by sterile processing staff. Only four steps to complete disassembly, with flush ports for maximum access during cleaning. Long term cost savings may be realized when only worn components are replaced as necessary compared to requisitioning a new full instrument.

Integra's 3-Piece Modular Laparoscopic instrument line is available in 330mm, 360mm and 450mm lengths to suit patients of all sizes. Shaft and insert will accommodate up to 6 different handles styles; with and without ratchet mechanisms, and with and without rotation. Pistol grip or axial handle styles available. When assembled, reusable graspers, dissectors and scissors are available in a monopolar configuration.



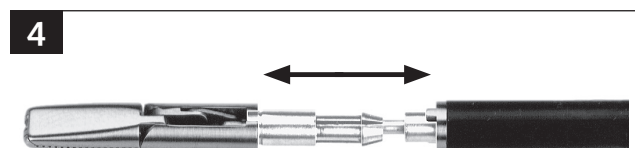
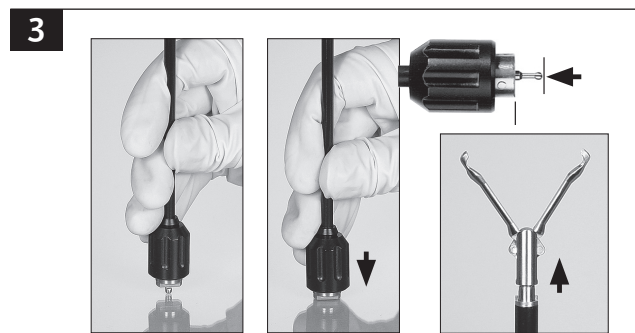
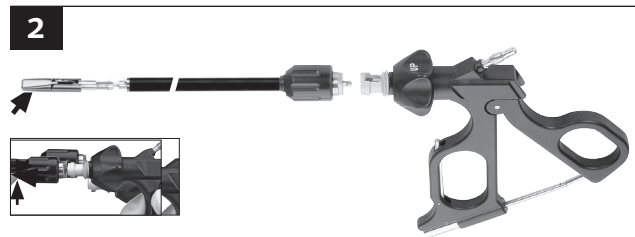
**Assembly**

- Ensure that the working part is closed. The nose of the tubular shaft and the notches on the insert must be on top of each other. The working end must audibly engage into the tubular shaft.
- Open the grip completely. Connect the ball retainer of the working part into the coupling of the grip.
- Close the grip completely.
- Tighten the union nut by hand.

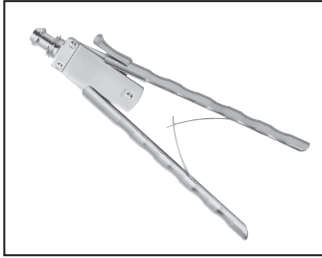


**Disassembly**

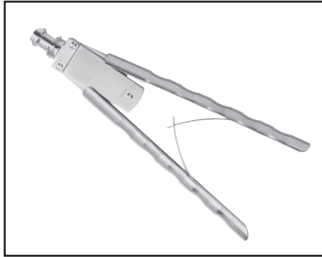
- Loosen the union nut.
- Open the grip completely. Disconnect the working part.
- Release the working end from the tubular shaft by pressing the ball retainer towards the working end.
- Remove the working insert completely from the tubular shaft.



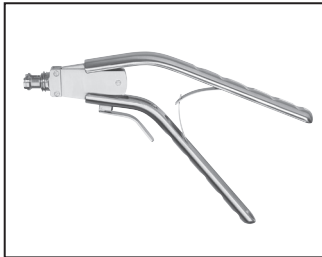
**Axial-Style Handle**



Catalog #	Description
652106	Axial handle, spreading spring and ratchet

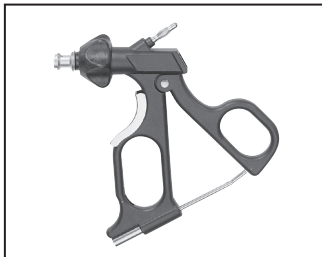


Catalog #	Description
652107	Axial handle, spreading spring



Catalog #	Description
652108	Axial angled handle, spreading spring and ratchet

**Ergonomic Ring Handle**



Catalog #	Description
652110	Ergonomic ring handle with rotation, stepless ratchet, release key and HF connection



Catalog #	Description
652112	Ergonomic ring handle with rotation and HF connection



Catalog #	Description
652113	Ergonomic ring handle with rotation, ratchet, push button release and HF connection



### Shaft - 5mm



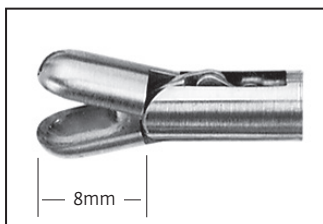
Catalog #	Length	Description
652501	330mm	
652503	360mm	Tube shaft 5mm, insulated, with Luer lock
652505	450mm	

### Shaft - 10mm



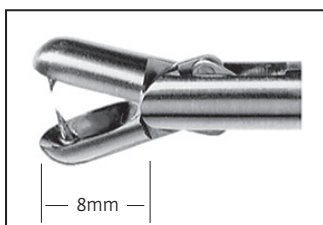
Catalog #	Length	Description
652601	330mm	
652603	360mm	Tube shaft 10mm, insulated, cylindrical tip, with Luer Lock
652605	450mm	

**Biopsy Cup - 5mm**



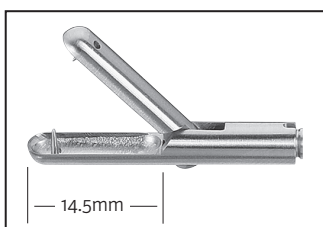
**Biopsy Cup, double action jaws**

Catalog #	Length
654100	330mm
655100	360mm
656100	450mm



**Biopsy Cup with thorn, double action jaws**

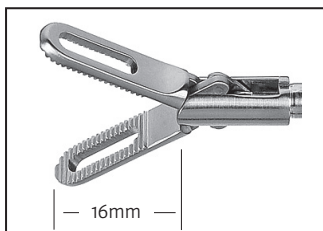
Catalog #	Length
654101	330mm
655101	360mm
656101	450mm



**Biopsy Cup long with thorn, single action jaws**

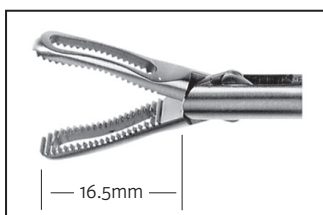
Catalog #	Length
654103	330mm
655103	360mm
656103	450mm

**Dissecting Forceps - 5mm**



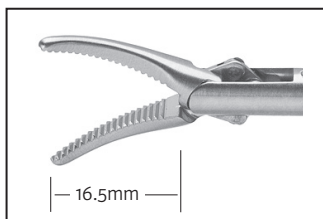
**Dissecting Forceps, fenestrated, double action jaws**

Catalog #	Length
654200	330mm
655200	360mm
656200	450mm



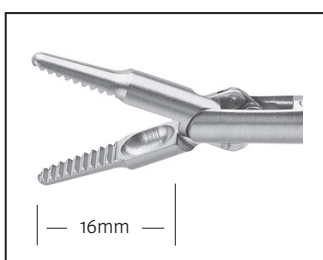
**Dissecting Forceps, fenestrated, double action jaws**

Catalog #	Length
654201	330mm
655201	360mm
656201	450mm



**Dissecting Forceps, tapered Maryland, double action jaws**

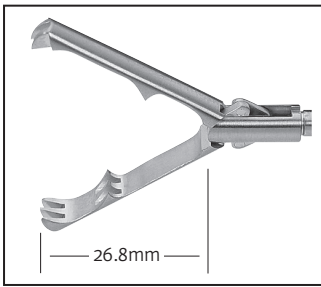
Catalog #	Length
654204	330mm
655204	360mm
656204	450mm



**Dissecting Forceps, tapered, double action jaws**

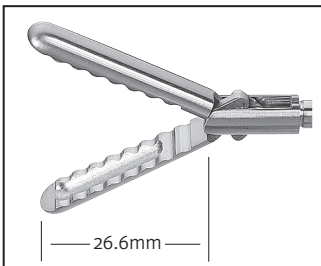
Catalog #	Length
654205	330mm
655205	360mm
656205	450mm

### Grasping Forceps - 5mm



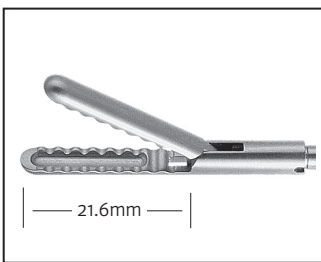
Aggressive claw grasping forceps, double action jaws

Catalog #	Length
654500	330mm
655500	360mm
656500	450mm



Atraumatic grasping forceps, with wavy teeth and reservoir, double action jaws

Catalog #	Diameter
654504	5
655504	5
656504	5



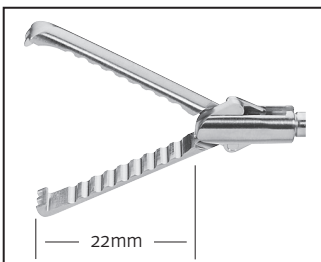
Atraumatic grasping forceps, with wavy teeth and reservoir, single action jaws

Catalog #	Length
654505	330mm
655505	360mm
656505	450mm



Claw grasping and extracting forceps, 2x3 teeth, single action jaws

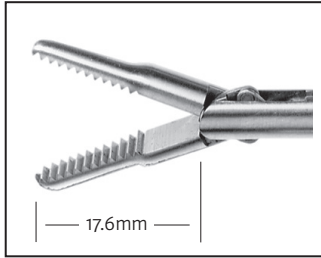
Catalog #	Length
654508	330mm
655508	360mm
656508	450mm



Claw grasping forceps for retraction, with wavy teeth, double action jaws

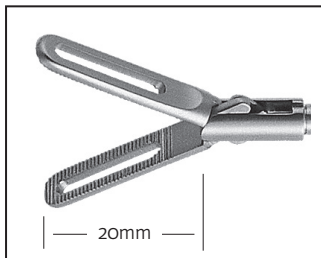
Catalog #	Length
654509	330mm
655509	360mm
656509	450mm

**Grasping Forceps - 5mm**



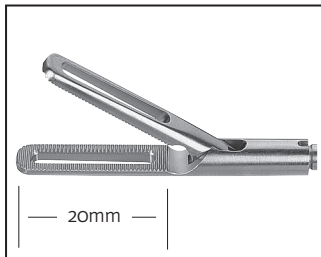
Dolphin grasping forceps, double action jaws

Catalog #	Length
654514	330mm
655514	360mm
656514	450mm



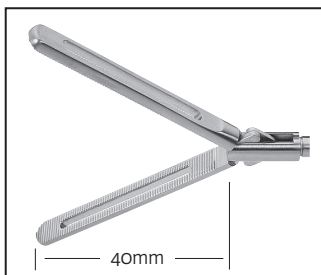
Dorsey grasping forceps, fenestrated, double action jaws

Catalog #	Length
654515	330mm
655515	360mm
656515	450mm



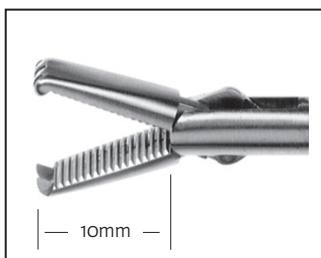
Dorsey grasping forceps, fenestrated, single action jaws

Catalog #	Length
654516	330mm
655516	360mm
656516	450mm



Dorsey grasping forceps, fenestrated, double action jaws

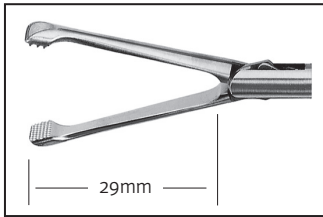
Catalog #	Length
654517	330mm
655517	360mm
656517	450mm



Grasping forceps with 2x4 teeth, double action jaws

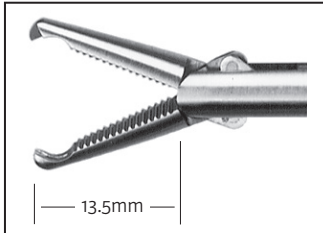
Catalog #	Length
654522	330mm
655522	360mm
656522	450mm

### Grasping Forceps - 5mm



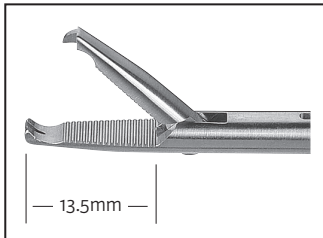
Grasping forceps with fine crosswise teeth, double action jaws

Catalog #	Length
654525	330mm
655525	360mm
656525	450mm



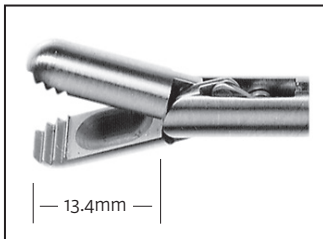
Grasping forceps with mouse teeth, double action jaws

Catalog #	Length
654526	330mm
655526	360mm
656526	450mm



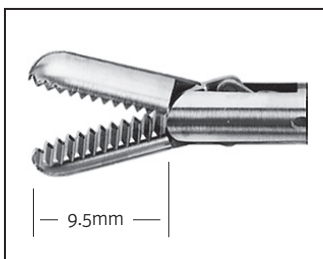
Grasping forceps with mouse teeth, single action jaws

Catalog #	Length
654527	330mm
655527	360mm
656527	450mm



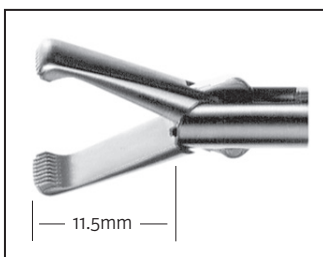
Grasping forceps with reservoir, blunt, double action jaws

Catalog #	Length
654528	330mm
655528	360mm
656528	450mm



Grasping forceps, double action jaws

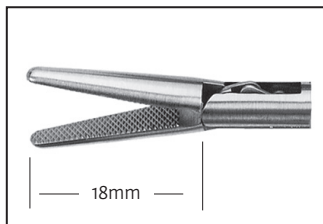
Catalog #	Length
654531	330mm
655531	360mm
656531	450mm



Grasping forceps, distal with a row of teeth, double action jaws

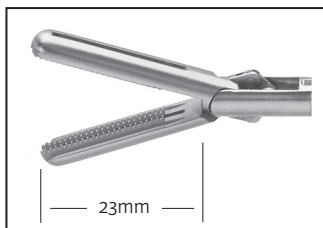
Catalog #	Length
654532	330mm
655532	360mm
656532	450mm

**Grasping Forceps - 5mm**



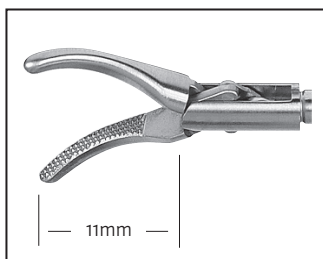
Grasping forceps, sharp, crosswise teeth, double action jaws

Catalog #	Length
654535	330mm
655535	360mm
656535	450mm



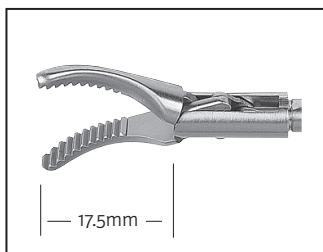
Hunter Bowel Grasper, double action jaws

Catalog #	Length
654539	330mm
655539	360mm
656539	450mm



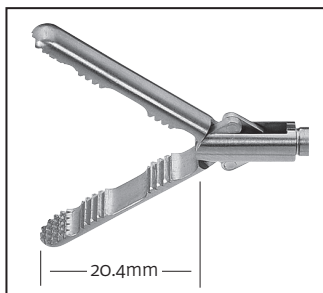
Kelly grasping forceps, double action jaws

Catalog #	Length
654540	330mm
655540	360mm
656540	450mm



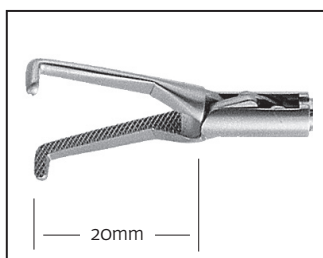
Wave grasping forceps, Maryland, double action

Catalog #	Length
654541	330mm
655541	360mm
656541	450mm



Maxigrip grasping forceps, double action jaws

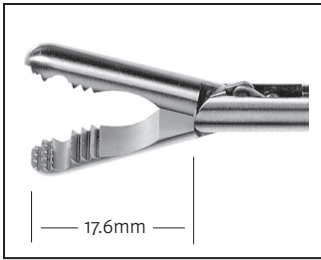
Catalog #	Length
654542	330mm
655542	360mm
656542	450mm



Mixer grasping forceps, 90 degrees, double action jaws

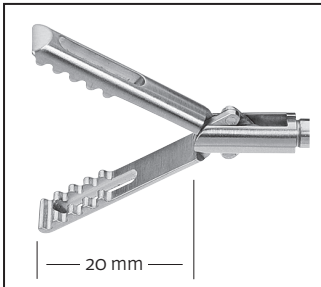
Catalog #	Length
654544	330mm
655544	360mm
656544	450mm

### Grasping Forceps - 5mm



Universal grasping forceps, double action jaws

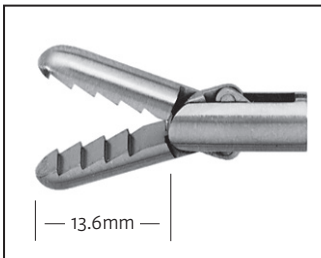
Catalog #	Length
654552	330mm
655552	360mm
656552	450mm



Wave grasping forceps, fenestrated, double action jaws

Catalog #	Length
654553	330mm
655553	360mm
656553	450mm

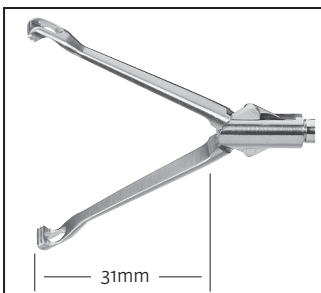
### Extracting Forceps - 5mm



Extracting forceps with a row of retrograde teeth, double action jaws

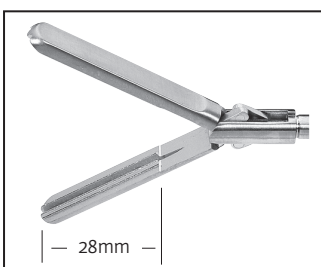
Catalog #	Length
654519	330mm
655519	360mm
656519	450mm

### Clamp - 5mm



Babcock clamp, double action jaws

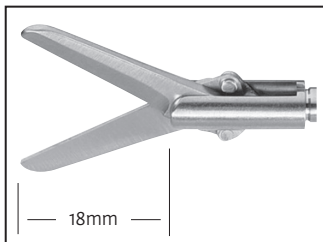
Catalog #	Length
654506	330mm
655506	360mm
656506	450mm



DeBakey clamp, double action jaws

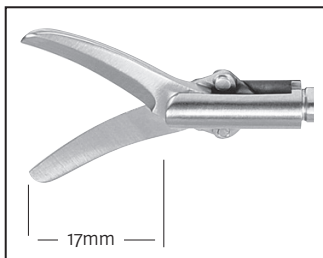
Catalog #	Length
654511	330mm
655511	360mm
656511	450mm

**Scissors - 5mm**



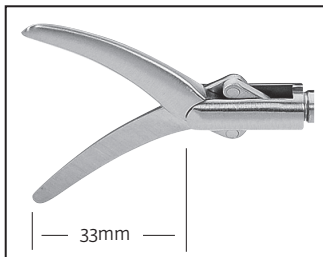
**Metzenbaum Preparation Scissors, straight, double action jaws**

Catalog #	Length
654700	330mm
655700	360mm
656700	450mm



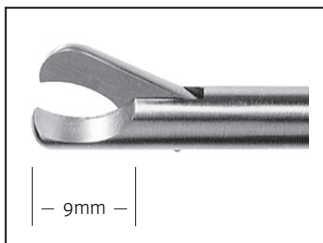
**Metzenbaum Preparation Scissors, curved, double action jaws**

Catalog #	Length
654701	330mm
655701	360mm
656701	450mm



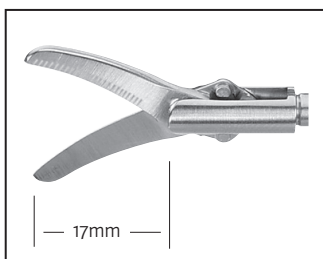
**Wondercut Preparation Scissors, curved, double action jaws**

Catalog #	Length
654702	330mm
655702	360mm
656702	450mm



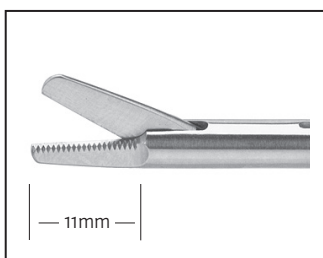
**Hook scissors, single action jaws**

Catalog #	Length
654704	330mm
655704	360mm
656704	450mm



**Metzenbaum Preparation Scissors, curved, strong version, serrated, double action jaws**

Catalog #	Length
654708	330mm
655708	360mm
656708	450mm

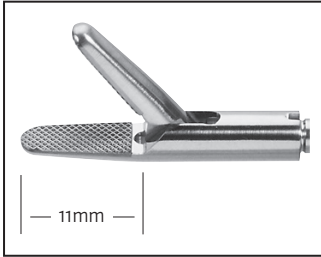


**Jarit Supercut™ scissors, straight, single action jaws**

Catalog #	Length
654712	330mm
655712	360mm
656712	450mm

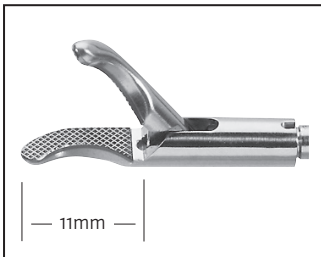


## Needle Holder - 5mm



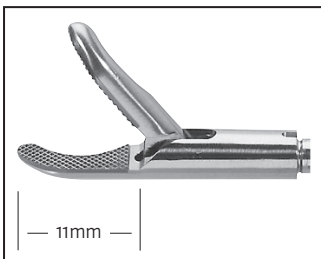
Needle holder, straight, with inserted tungsten carbide, crosswise teeth, single action jaws

Catalog #	Length
654900	330mm
655900	360mm
656900	450mm



Needle holder, left curved, with inserted tungsten carbide, crosswise teeth, single action jaws

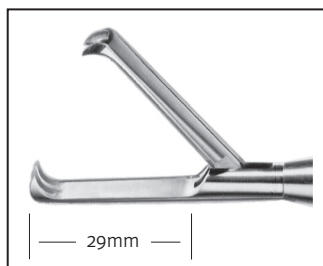
Catalog #	Length
654901	330mm
655901	360mm
656901	450mm



Needle holder, right curved, with inserted tungsten carbide, crosswise teeth, single action jaws

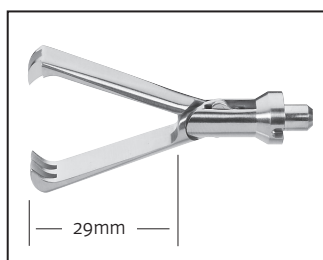
Catalog #	Length
654902	330mm
655902	360mm
656902	450mm

**Grasping Forceps - 10mm**



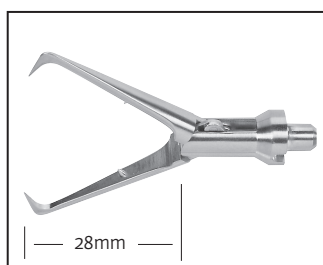
Claw Grasping forceps, 2x3 teeth, single action jaws

Catalog #	Length
654605	330mm
655605	360mm
656605	450mm



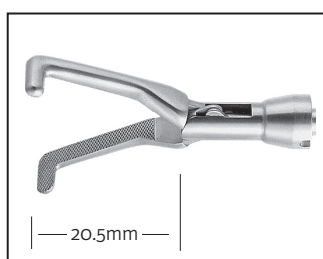
Claw Grasping forceps, 2x3 teeth, double action jaws

Catalog #	Length
654606	330mm
655606	360mm
656606	450mm



Tenaculum forceps, double action jaws

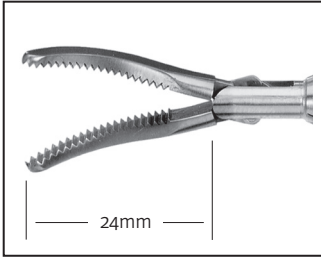
Catalog #	Length
654621	330mm
655621	360mm
656621	450mm



Mixer grasping forceps, double action jaws

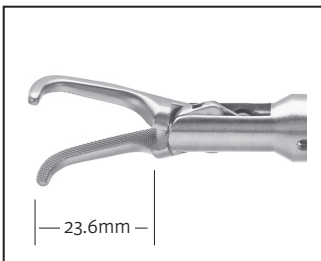
Catalog #	Length
654622	330mm
655622	360mm
656622	450mm

## Dissecting Forceps - 10mm



Maryland dissecting forceps, double action jaws

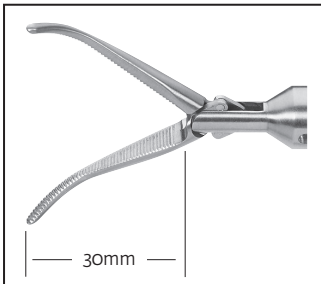
Catalog #	Length
654304	330mm
655304	360mm
656304	450mm



Dissecting forceps, right angle, double action jaws

Catalog #	Length
654303	330mm
655303	360mm
656303	450mm

## Clamp - 10mm



Overhold clamp with fine teeth, curved, double action jaws

Catalog #	Length
654623	330mm
655623	360mm
656623	450mm



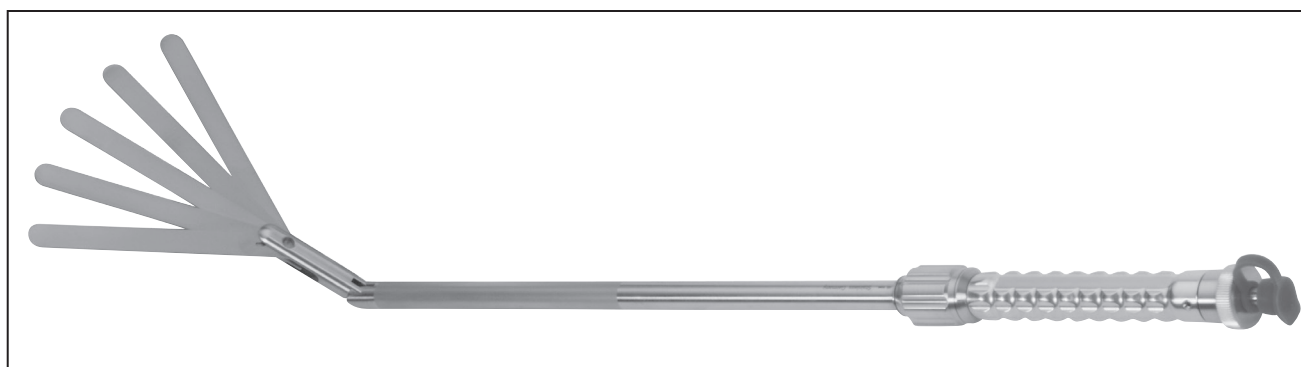


# **One-Piece Instruments**

**Fan Retractors**

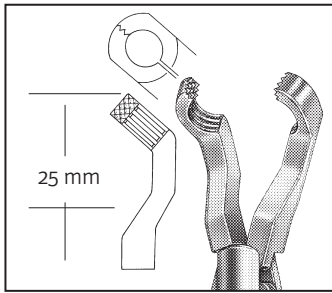


Catalog #	Length	Diameter	Description
653101	330mm		
653103	360mm	5	Five fingers, 55mm spread articulating, 45° angleable, 42mm fan blade length
653105	450mm		

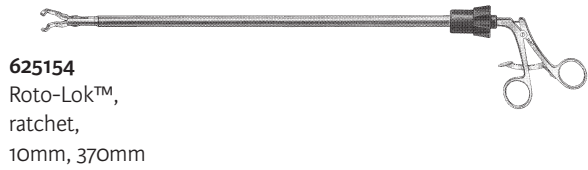


Catalog #	Length	Diameter	Description
653201	330mm		
653203	360mm	10	Five fingers, 95mm spread articulating, 45° angleable, 72.5mm fan blade length
653205	450mm		

## Forceps

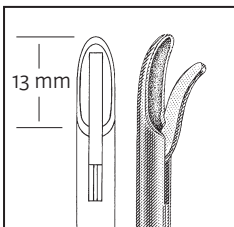


**Anvil Grasping Forceps**  
Jaws specially shaped to grasp and hold the anvil of a circular stapler.

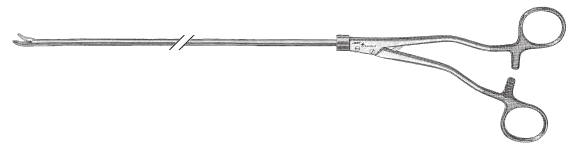


**625154**  
Roto-Lok™, ratchet, 10mm, 370mm

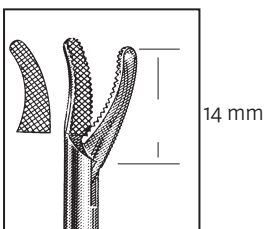
## Needle holders



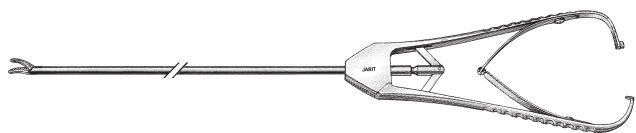
**Romeo Self-Righting Needle Holder**  
Up-curved, Jarit Stardust™ jaws self-right curved needles; needles held very securely at any angle within the jaws.



**600266**  
Up-curve, 5mm, 325mm



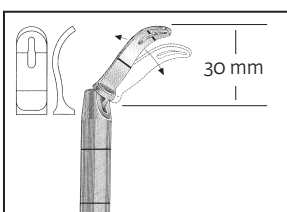
**Appel Needle Holders**  
Tapered jaws stabilize the needle while allowing better visibility at the suture site; Carb-Bite™ jaws are designed for a firm, secure grip on the needle and long life of the instrument.



**600250**  
Left Curve, 5mm, 330mm

## Articulators

Articulate rapidly from 0° to 90°; bi-directional Roto-Lok™ wheel.



**Articulator Retractor**  
S-shaped distal tip for atraumatic retraction of the esophagus; keyhole for maneuvering penrose drain or LAP-BAND® System.



**600584**  
Roto-Lok™, locking lever, 10mm, 410mm







## **Accessories**

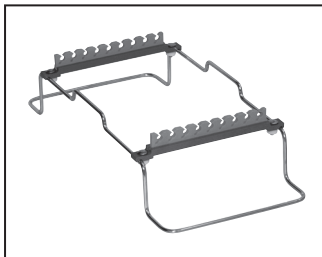
## Cleaning and Storage Accessories



### Full-Size (23" x 11") Containers

Height	Solid Bottom Full Container Catalog #	Perforated Bottom Full Container Catalog #
6"	730602	730612
8"	730603	-

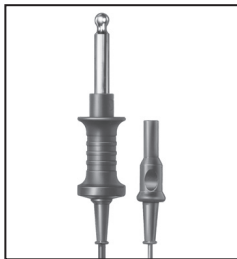
Commonly used with standard length instruments and the laparoscopic rack



### Instrument Rack

Catalog #	Description
790010 <sup>(*)</sup>	Instrument rack with silicone instrument holders, space for up to 9 instruments

## Electrosurgical Accessory



### Monopolar Cable

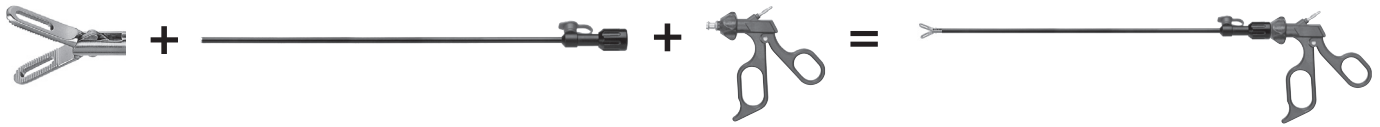
**600290B**  
10' (3m)

**IMPORTANT:** When disconnecting electrosurgical cables from the generator or instrument, always grasp the cables by the connector only. Never pull the cable by the cord. Do not use instruments or cables if the insulation is not fully intact.

<sup>(\*)</sup>Not a medical device



# **Laparoscopic Suggested Sets**



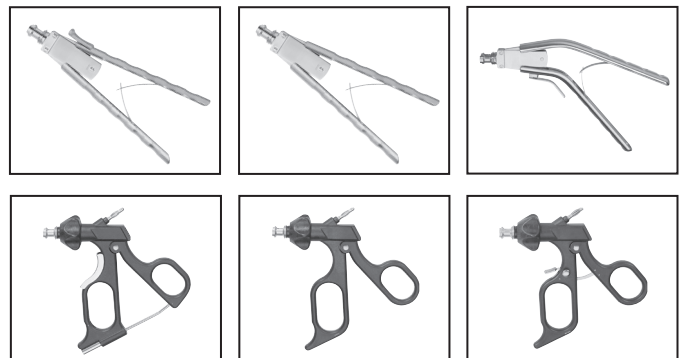
**Suggested Set for Laparoscopic Cholecystectomy**

Qty	Insert Catalog #	Length	Diameter	Description
1	655504	360mm	5	Atraumatic grasping forceps, with wavy teeth and reservoir, double action jaws
1	655505	360mm	5	Atraumatic grasping forceps, with wavy teeth and reservoir, single action jaws
1	655552	360mm	5	Universal grasping forceps, double action jaws
1	655532	360mm	5	Grasping forceps, distal with a row of teeth, double action jaws
1	655515	360mm	5	Dorsey grasping forceps, fenestrated, double action jaws
1	655541	360mm	5	Maryland grasping forceps, double action jaws
1	655205	360mm	5	Dissecting forceps, tapered, double action jaws
1	655201	360mm	5	Dissecting forceps, fenestrated, double action jaws
1	655544	360mm	5	Mixer grasping forceps, 90 degrees, double action jaws
1	655508	360mm	5	Claw grasping and extracting forceps, 2+3 teeth, single action jaws
1	655704	360mm	5	Hook scissors, single action jaws
1	655708	360mm	5	Metzenbaum Preparation Scissors, curved, strong version, serrated, double action jaws

Qty	Shaft Catalog #	Length	Diameter	Description
12	652503	360mm	5	Tube shaft 5mm, insulated, with Luer lock

**Handle Selections**

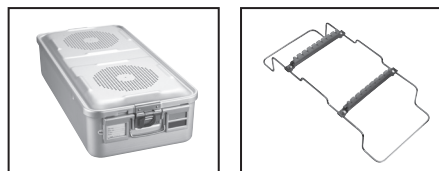
Catalog #	Description
652106	Axial handle, spreading spring and ratchet
652107	Axial handle, spreading spring
652108	Axial angled handle, spreading spring and ratchet
652110	Ergonomic ring handle with rotation, stepless ratchet, release key and HF connection
652112	Ergonomic ring handle with rotation and HF connection
652113	Ergonomic ring handle with rotation, ratchet, push button release and HF connection



Be sure to select as many handles as inserts/shafts

**Additional Suggested Instrumentation**

Qty	Catalog #	Description
1	653101	Five fingers, 55mm spread articulating, 45° angleable, 42mm fan blade length
1	655901	Needle holder, left curved, with inserted tungsten carbide, crosswise teeth, single action jaws



**730603**  
Solid bottom,  
Full size container

**790010<sup>(\*)</sup>**  
Instrument Rack

<sup>(\*)</sup>Not a medical device



### Suggested Set for Laparoscopic Appendectomy

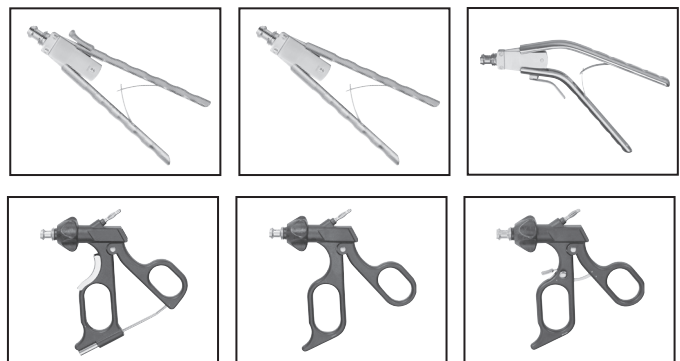
Qty	Insert Catalog #	Length	Diameter	Description
1	655504	360mm	5	Atraumatic grasping forceps, with wavy teeth and reservoir, double action jaws
1	655505	360mm	5	Atraumatic grasping forceps, with wavy teeth and reservoir, single action jaws
1	655515	360mm	5	Dorsey grasping forceps, fenestrated, double action jaws
1	655506	360mm	5	Babcock clamp, double action jaws
1	655541	360mm	5	Maryland grasping forceps, double action jaws
1	655205	360mm	5	Dissecting forceps, tapered, double action jaws
1	655544	360mm	5	Mixer grasping forceps, 90 degrees, double action jaws
1	655508	360mm	5	Claw grasping and extracting forceps, 2+3 teeth, single action jaws
1	655708	360mm	5	Metzenbaum Preparation Scissors, curved, strong version, serrated, double action jaws

Qty	Shaft Catalog #	Length	Diameter	Description
9	652503	360mm	5	Tube shaft 5mm, insulated, with Luer lock

### Handle Selections

Catalog #	Description
652106	Axial handle, spreading spring and ratchet
652107	Axial handle, spreading spring
652108	Axial angled handle, spreading spring and ratchet
652110	Ergonomic ring handle with rotation, stepless ratchet, release key and HF connection
652112	Ergonomic ring handle with rotation and HF connection
652113	Ergonomic ring handle with rotation, ratchet, push button release and HF connection

Be sure to select as many handles as inserts/shafts

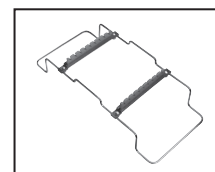


### Additional Suggested Instrumentation

Qty	Catalog #	Description
1	653101	Five fingers, 55mm spread articulating, 45° angleable, 42mm fan blade length
1	655901	Needle holder, left curved, with insterted tungsten carbide, crosswise teeth, single action jaws



730603  
Solid bottom,  
Full size container



790010<sup>(\*)</sup>  
Instrument Rack

<sup>(\*)</sup> Not a medical device



**Suggested Set for Laparoscopic Bariatric Procedure**

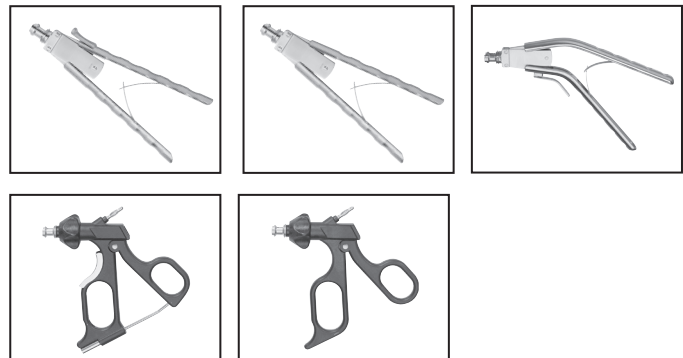
Qty	Insert Catalog #	Length	Diameter	Description
3	656504	450mm	5	Atraumatic grasping forceps, with wavy teeth and reservoir, double action jaws
1	656544	450mm	5	Mixer grasping forceps, 90 degrees, double action jaws
3	656539	450mm	5	Hunter Bowel Grasper, double action jaws
1	656541	450mm	5	Maryland grasping forceps, double action jaws

Qty	Shaft Catalog #	Length	Diameter	Description
8	652505	450mm	5	Tube shaft 5mm, insulated, with Luer lock

**Handle Selections**

Catalog #	Description
652106	Axial handle, spreading spring and ratchet
652107	Axial handle, spreading spring
652108	Axial angled handle, spreading spring and ratchet
652110	Ergonomic ring handle with rotation, stepless ratchet, release key and HF connection
652112	Ergonomic ring handle with rotation and HF connection
652113	Ergonomic ring handle with rotation, ratchet, push button release and HF connection

Be sure to select as many handles as inserts/shafts

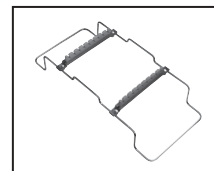


**Additional Suggested Instrumentation**

Qty	Catalog #	Description
1	653105	Five fingers, 55mm spread articulating, 45° angleable, 42mm fan blade length
1	656901	Needle holder, left curved, with inserted tungsten carbide, crosswise teeth, single action jaws



**730603**  
Solid bottom,  
Full size container



**790010<sup>(\*)</sup>**  
Instrument Rack

<sup>(\*)</sup>Not a medical device



### Alternate Suggested Set for Laparoscopic Bariatric Procedure

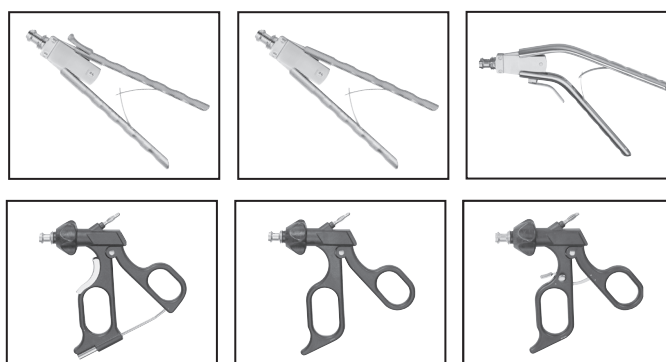
Qty	Insert Catalog #	Length	Diameter	Description
1	656704	450mm	5	Hook scissors, single action jaws
1	656509	450mm	5	Claw grasping forceps for retraction, with wavy teeth, double action jaws
1	656541	450mm	5	Maryland grasping forceps, double action jaws
2	656539	450mm	5	Hunter Bowel Grasper, double action jaws
1	656702	450mm	5	Wondercut Preparation Scissors, curved, double action jaws

Qty	Shaft Catalog #	Length	Diameter	Description
7	652505	450mm	5	Tube shaft 5mm, insulated, with Luer lock

### Handle Selections

Catalog #	Description
652106	Axial handle, spreading spring and ratchet
652107	Axial handle, spreading spring
652108	Axial angled handle, spreading spring and ratchet
652110	Ergonomic ring handle with rotation, stepless ratchet, release key and HF connection
652112	Ergonomic ring handle with rotation and HF connection
652113	Ergonomic ring handle with rotation, ratchet, push button release and HF connection

Be sure to select as many handles as inserts/shafts

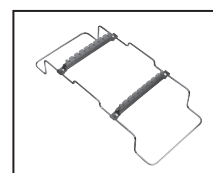


### Additional Suggested Instrumentation

Qty	Catalog #	Description
1	653105	Five fingers, 55mm spread articulating, 45° angleable, 42mm fan blade length
1	656901	Needle holder, left curved, with inserted tungsten carbide, crosswise teeth, single action jaws
2	625165LL	Roto-Lok™ Hunter bowel grasper, 5mm
1	625154	Anvil Grasping Forceps, Roto-Lock
1	600266	Romeo Self-Righting Needle Holder, 5mm
1	600584	Articular Esophagus Retractor, 10mm



730603  
Solid bottom,  
Full size container



790010<sup>(\*)</sup>  
Instrument Rack

<sup>(\*)</sup> Not a medical device







**Numerical Index**  
**Alphabetical Index**

#

600250.....	23	654606.....	18	655900.....	17
600266.....	23, 31	654621.....	18	655901.....	17, 28, 29
600290B.....	26	654622.....	18	655902.....	17
600584.....	23, 31	654623.....	19	656100.....	10
625154.....	23, 31	654700.....	16	656101.....	10
652106.....	8, 28, 29, 30, 31	654701.....	16	656103.....	10
652107.....	8, 28, 29, 30, 31	654702.....	16	656200.....	10
652108.....	8, 28, 29, 30, 31	654704.....	16	656201.....	10
652110.....	8, 28, 29, 30, 31	654708.....	16	656204.....	10
652112.....	8, 28, 29, 30, 31	654712.....	16	656205.....	10
652113.....	8, 28, 29, 30, 31	654900.....	17	656303.....	19
652501.....	9	654901.....	17	656304.....	19
652503.....	9, 28, 29	654902.....	17	656500.....	11
652505.....	9, 30, 31	655100.....	10	656504.....	11, 30
652601.....	9	655101.....	10	656505.....	11
652603.....	9	655103.....	10	656506.....	15
652605.....	9	655200.....	10	656508.....	11
653101.....	22, 28, 29	655201.....	10, 28	656509.....	11, 31
653103.....	22	655204.....	10	656511.....	15
653105.....	22, 30, 31	655205.....	10, 28, 29	656514.....	12
653201.....	22	655303.....	19	656515.....	12
653203.....	22	655304.....	19	656516.....	12
653205.....	22	655500.....	11	656517.....	12
654100.....	10	655504.....	11, 28, 29	656519.....	15
654101.....	10	655505.....	11, 28, 29	656522.....	12
654103.....	10	655506.....	15, 29	656525.....	13
654200.....	10	655508.....	11, 28, 29	656526.....	13
654201.....	10	655509.....	11	656527.....	13
654204.....	10	655511.....	15	656528.....	13
654205.....	10	655514.....	12	656531.....	13
654303.....	19	655515.....	12, 28, 29	656532.....	13
654304.....	19	655516.....	12	656535.....	14
654500.....	11	655517.....	12	656539.....	14, 30, 31
654504.....	11	655519.....	15	656540.....	14
654505.....	11	655522.....	12	656541.....	14, 30, 31
654506.....	15	655525.....	13	656542.....	14
654508.....	11	655526.....	13	656544.....	14, 30
654509.....	11	655527.....	13	656552.....	15
654511.....	15	655528.....	13	656553.....	15
654514.....	12	655531.....	13	656605.....	18
654515.....	12	655532.....	13, 28	656606.....	18
654516.....	12	655535.....	14	656621.....	18
654517.....	12	655539.....	14	656622.....	18
654519.....	15	655540.....	14	656623.....	19
654522.....	12	655541.....	14, 28, 29	656700.....	16
654525.....	13	655542.....	14	656701.....	16
654526.....	13	655544.....	14, 28, 29	656702.....	16, 31
654527.....	13	655552.....	15, 28	656704.....	16, 31
654528.....	13	655553.....	15	656708.....	16
654531.....	13	655605.....	18	656712.....	16
654532.....	13	655606.....	18	656900.....	17
654535.....	14	655621.....	18	656901.....	17, 30, 31
654539.....	14	655622.....	18	656902.....	17
654540.....	14	655623.....	19	730602.....	28
654541.....	14	655700.....	16	730603.....	26, 28, 29, 30, 31
654542.....	14	655701.....	16	730612.....	28
654544.....	14	655702.....	16	790010 <sup>(*)</sup> .....	26, 28, 29, 30, 31
654552.....	15	655704.....	16, 28		
654553.....	15	655708.....	16, 28, 29		
654605.....	18	655712.....	16		

<sup>(\*)</sup> Not a medical device

**A**

Accessories ..... 26

**B**

Biopsy Cup 5mm ..... 10  
Bowel Grasping Forceps ..... 14

**C**

Cable, monopolar ..... 26  
Clamp 5mm ..... 15  
Clamp 10mm ..... 19  
Containers ..... 26

**D**

Dissecting Forceps, Fenestrated ..... 10  
Dissecting Forceps, Tapered ..... 10  
Dissecting Forceps 10mm ..... 19

**E**

Electrosurgical accessory ..... 26  
Ergonomic Ring Handle ..... 8  
Extracting Forceps ..... 15

**F**

Fan Retractors ..... 22

**Forceps** ..... 10 - 19  
*Bowel Grasping Forceps* ..... 14  
*Dissecting Forceps* ..... 10, 19  
*Extracting Forceps* ..... 15  
*Grasping Forceps* ..... 11, 12, 13, 14, 15, 18

**H**

**Handles** ..... 8  
*Axial-Style Handle* ..... 8  
*Ergonomic Ring Handle* ..... 8

**I**

**Inserts** ..... 10  
*Biopsy Cup 5mm* ..... 10  
*Bowel Grasping Forceps* ..... 14  
*Clamps* ..... 15, 19  
*Extracting Forceps* ..... 15  
*Grasping Forceps 5mm* ..... 11 - 15  
*Grasping Forceps 10mm* ..... 18  
*Needle Holders* ..... 17  
*Scissors* ..... 16

Instrument Rack ..... 26

**M**

**Modular instruments, 3-Piece** ..... 5  
*Handles* ..... 8  
*Inserts* ..... 10, 11, 12, 13, 14, 15, 16, 17, 18, 19  
*Shafts* ..... 9

**N**

**Needle Holders** ..... 17  
*Straight* ..... 17  
*Right Curved* ..... 17  
*Left Curved* ..... 17

**O**

**One-Piece instruments** ..... 21  
*Articulator/Retractor* ..... 23  
*Fan Retractors* ..... 22  
*Grasping Forceps* ..... 23  
*Needle Holders* ..... 23  
*Roto-Lok™ Forceps* ..... 23

**S**

**Scissors** ..... 16  
*Straight* ..... 16  
*Curved* ..... 16  
*Single Action* ..... 16  
*Supercut™* ..... 16

**Shafts**  
*Shaft - 5mm* ..... 9  
*Shaft - 10mm* ..... 9

Suction/Irrigation Set ..... 26

**Suggested Sets** ..... 27  
*for Laparoscopic Cholecystectomy* ..... 28  
*for Laparoscopic Appendectomy* ..... 29  
*for Laparoscopic Bariatric Procedure* ..... 30, 31

# Codman®

SPECIALTY SURGICAL

A DIVISION OF INTEGRA LIFESCIENCES



Distributed by

For more information or to place an order, please contact:  
Sales & Marketing EMEA  
Integra LifeSciences Services (France) SAS  
Immeuble Séquoia 2 • 97 allée Alexandre Borodine  
Parc technologique de la Porte des Alpes  
69800 Saint Priest • FRANCE  
+33 (0)4 37 47 59 00 phone • +33 (0)4 37 47 59 99 fax  
[integralife.com](http://integralife.com)

**Customer Services :**

Europe, Middle-East and Africa : +33 (0) 437 47 59 50 • +33 (0) 437 47 59 25 (Fax) • [cemea@integralife.com](mailto:cemea@integralife.com)  
France : +33 (0) 437 47 59 10 • +33 (0) 437 47 59 29 (Fax) • [custservfrance@integralife.com](mailto:custservfrance@integralife.com)  
United Kingdom : +44 (0) 1264 345 780 • +44 (0) 1264 363 782 (Fax) • [custsvc.uk@integralife.com](mailto:custsvc.uk@integralife.com)  
Germany : +49 (0) 2102 5535 6200 • +49 (0) 2102 5536 636 (Fax) • [custsvgermany@integralife.com](mailto:custsvgermany@integralife.com)  
Benelux : +32 (0)2 257 4130 • +32 (0)2 257 2466 (Fax) • [custsvcbenelux@integralife.com](mailto:custsvcbenelux@integralife.com)  
Switzerland : +41 (0)227 21 2311 • +41 (0)2 27 21 23 99 (Fax) • [custsvcsuisse@integralife.com](mailto:custsvcsuisse@integralife.com)  
Italy : +39 (0)2 577 89 21 • +39 (0)2 575 113 71 (Fax) • [custsvcitay@integralife.com](mailto:custsvcitay@integralife.com)

© 2018 Integra LifeSciences Corporation. All rights reserved. Last update : 09/2018. 0596093-3-EN  
DOCUMENT FOR USE IN EUROPE, MIDDLE-EAST AND AFRICA ONLY.



Integra York PA, Inc  
589 Davies Drive  
York, PA 17402 • États-Unis



Integra LifeSciences Services (France) SAS  
Immeuble Séquoia 2 • 97 allée Alexandre Borodine  
Parc technologique de la Porte des Alpes  
69800 Saint Priest • FRANCE

Availability of these products might vary from a given country or region to another, as a result of specific local regulatory approval or clearance requirements for sale in such country or region.

- Consult product labels and insert for any indication, contraindications, hazards, warnings, precautions and instruction for use.
- Non contractual document. The manufacturer reserves the right, without prior notice, to modify the products in order to improve their quality.
- Warning: Applicable laws restrict these products to sale by or on the order of a physician.

Products mentioned in this document are CE class I, IIa or IIb devices. Please contact Integra customer service should you need any additional information on devices classification. All the medical devices mentioned on this document are CE marked according to European council directive 93/42/EEC on medical devices and its relatives. References that are not medical devices are identified with the indication "NOT A MEDICAL DEVICE".

Integra and the Integra logo are registered trademarks of Integra LifeSciences Corporation in the United States and/or other countries.

Jarit™, Carb-Bite™, Jarit Supercut™, Roto-Cam™ and Roto-Lok™ are trademarks of J. Jamner Surgical Instruments, Inc., a subsidiary of Integra LifeSciences Corporation.